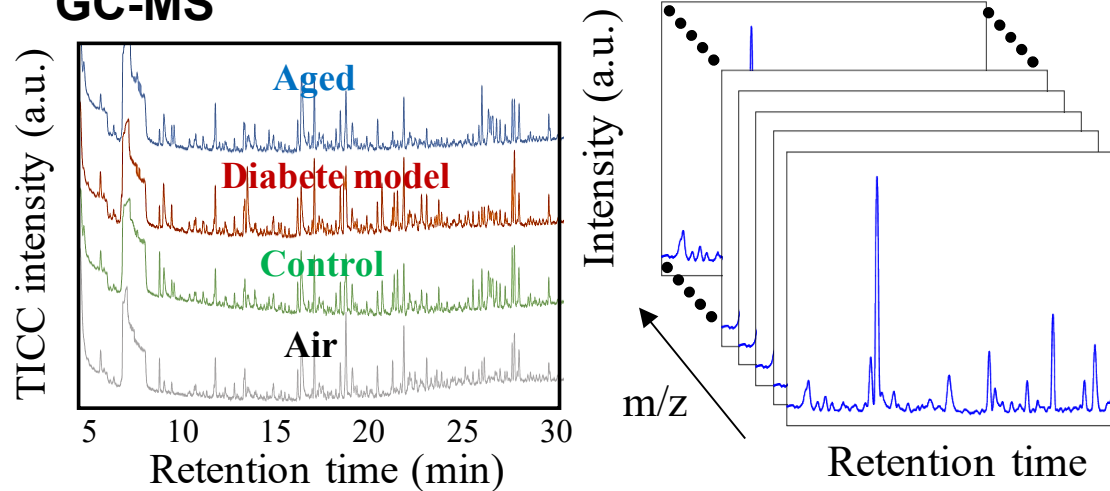


Development of ultra-sensitive body gas sensors toward real-time sensing of inflammatory markers

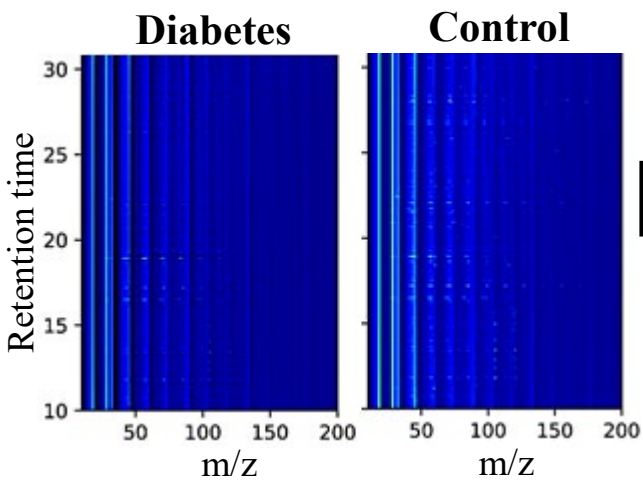
Search & identification of inflammatory markers

Body gas analysis (diabetes, CKD, sarcopenia)

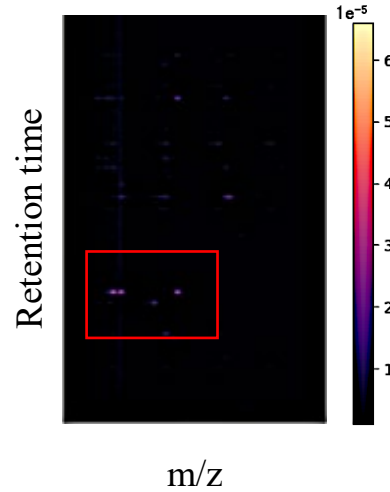
GC-MS



2D mapping image

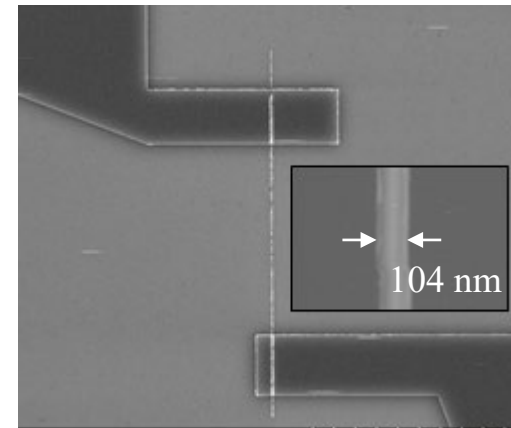


Machine learning
: feature extraction

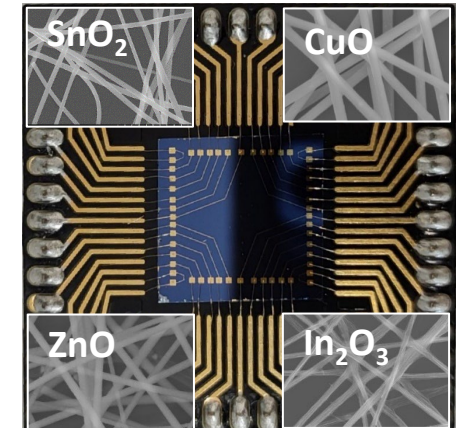


Ultra-sensitive gas detection

Nano-fabrication

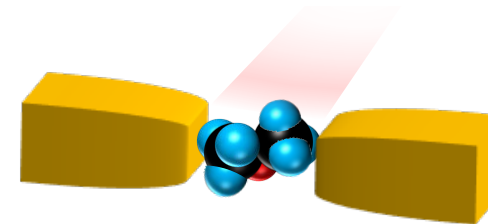


Nano-sensor array



Quantum sensing

Resonance tunneling · phonon · magnon



Wearable sensor

